

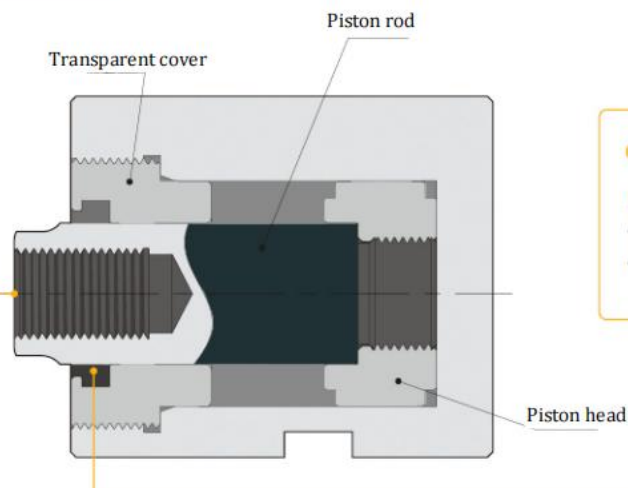
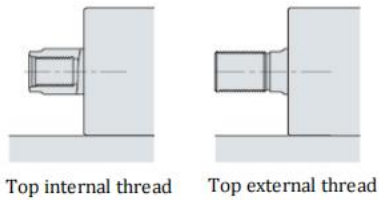
YBG-CDB/CSB oil pressure side uniaxial/biaxial oil-circuit plate thin cylinder

Pressure Range
20-140kg/cm <sup>2</sup>



● Piston shaft end form

The piston shaft is available in 2 top forms



● High quality seals

High quality seals are used to effectively prevent coolant and chips from entering the cylinder block.

The figure shows the sectional view of the YBG-CDB/CSB pull-in state

Model Representation

YBG-CDB/CSB ①★②③ (Example: YBG-CDB32\*40N/B)



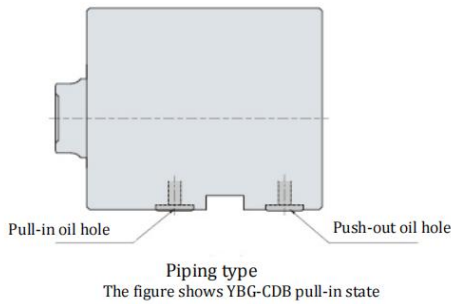
①Size	②Stroke
32	10 20 30 40 50 60
40	10 20 30 40 50 60 70
50	10 20 30 40 50 60 70 80
63	10 20 30 40 50 60 70 80 90 100

③Shaft end form	④Pressure-holding form
Inner teeth: N	Unmarked: Standard
External teeth: W	Holding pressure: B

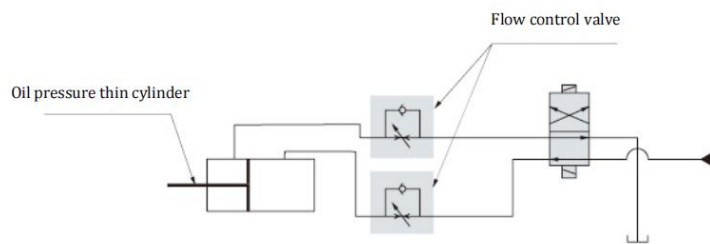
※ is the product ordered for production.

※ The cylinder block length B and BB of (5,10), (15,20), (25,30), (35,40), (45,50) and above strokes are the same.

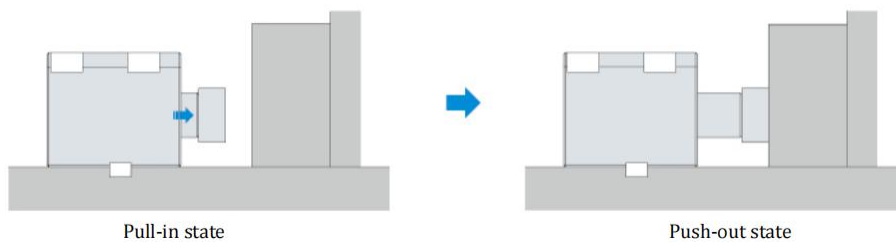
Piping Method



Oil Pressure Circuit Diagram (for reference only)



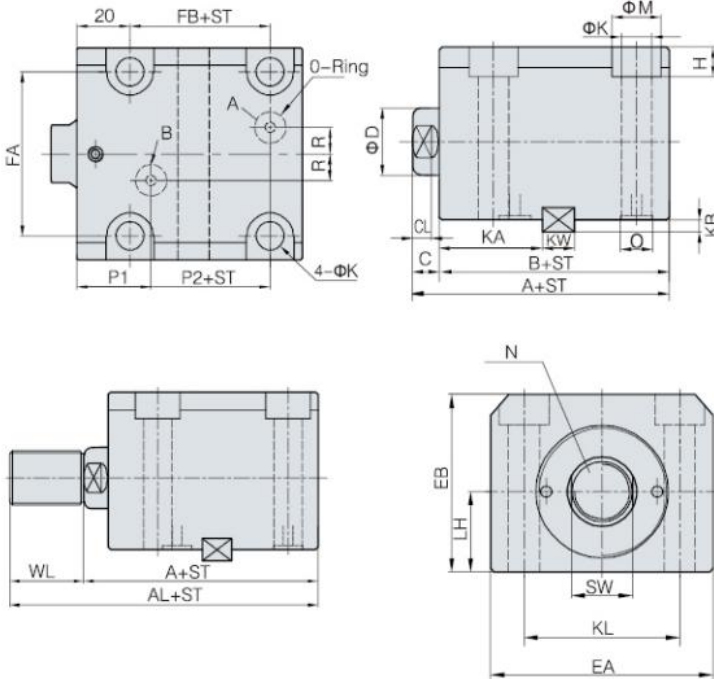
Action Description



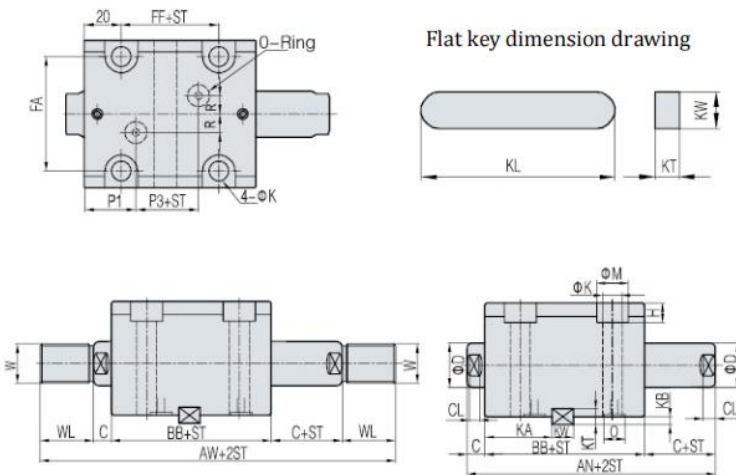
Cylinder Capacity

Bore of cylinder (mm)	20	25	32	40	50	63	80
Compression area (cm <sup>2</sup> )	3.14	4.91	8.04	12.57	19.64	31.17	50.27
Oil pressure (Mpa)	Cylinder capacity						
14.0	4.4	6.9	11.3	17.6	27.5	43.6	70.3
13.0	4.1	6.4	10.4	16.3	25.5	40.5	65.3
12.0	3.8	5.9	9.6	15.1	23.6	37.4	60.3
11.0	3.5	5.4	8.8	13.8	21.6	34.3	55.3
10.0	3.1	4.9	8.0	12.6	19.6	31.2	50.2
9.0	2.8	4.4	7.2	11.3	17.7	28.0	45.2
8.0	2.5	3.9	6.4	10.1	15.7	24.9	40.2
7.0	2.2	3.4	5.6	8.8	13.7	21.8	35.2
6.0	1.9	2.9	4.8	7.5	11.8	18.7	30.1
5.0	1.6	2.5	4.0	6.3	9.8	15.6	25.1
4.0	1.3	2.0	3.2	5.0	7.9	12.5	20.1
3.0	0.9	1.5	2.4	3.8	5.9	9.3	15.1
2.0	0.6	1.0	1.6	2.5	3.9	6.2	10.0

**YBG-CDB**



**YBG-CSB**



M	32	40	50	63
A	64	65	71	80
AL	89	95	106	120
AN	89	90	97	108
AW	139	150	167	188
B	54	55	60	67
BB	69	70	75	82
C	10	10	11	13
CL	7	7	8	10
D	20	25	30	35
SW	17	22	27	32
EA	70	80	94	114
EB	56	64	74	89
LH	25	29	34	42
FA	56	62	74	90
FB	24	23	27	32
FF	32	32	35	42
H	9	11	13	15
K	9	11	13	15
M	14	18	20	22
N	M12*1.75	M16*2.0	M20*2.5	M27*3.0
W	M16*1.5	M22*1.5	M26*1.5	M30*1.5
WL	25	30	35	40
P1	28	28	29.5	30
P2	14	15	18	20
P3	13	14	16	20
R	10	10	10	10
O	P7	P9	P9	P9

Note: the cylinder length B and BB of (5,10), (15,20), (25,30), (35,40), (45,50) and above strokes are the same.

**Key Dimension**

MODEL	32	40	50	63
KW	12	12	14	16
KT	8	8	9	10
KL	63	70	80	100
KA	38	38	40	42
KB	4.5	4.5	5	5.5

Note: ST=10 cylinder without keyway

ST means stroke, A: push-out oil hole, B: pull-in oil hole